

Exploring the Seashore is interesting and fun but when on the shore we must follow some simple rules to stay safe and protect the seashore environment and the plants and animals that live there.

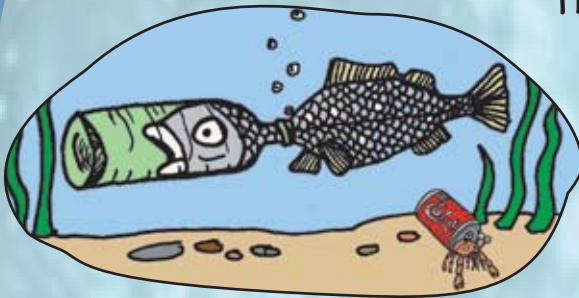
Before you go, tell someone where you are going, when you will be back and make sure you know what the weather and tides will be like. If you can, take a mobile phone.



Walk carefully over rocks, they may be slippery or unstable or you may kill or damage plants and animals. Cliffs should also be avoided as they may be unstable.

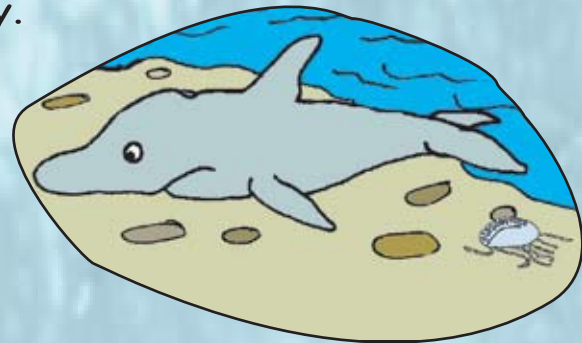


Do not take living plants or animals home with you. Try to take only photographs. If you do take shells home, make sure they are empty.



Take your litter home, it can be dangerous to people and wildlife and can ruin the scenery you are there to enjoy.

Report anything unusual that you find but do not touch anything if you are not sure it is safe.



Treat all living things with respect and replace any stone or seaweed exactly how you found it.

When you get home wash your hands !

For more information about Seashore life or to report what you find, visit:
www.marlin.ac.uk/learningzone