

Key

In an emergency



Defibrillator: At Westward Ho! Slipway (near the beach cafés) and at the Northam Burrows Visitor Centre (seasonal opening).



Lifeguards: RNLI lifeguards patrol Westward Ho! Beach seasonally.



Mobile signal available along most of the route, though may weaken in lower dips along the coast.

Information icons



Benches available / limited shelter



Dogs allowed



Toilets: (public toilets near Seafield car park)



Café / food kiosks: on the promenade



Parking: Free car park at Seafield Car Park. Or other alternatives in the village.



No bikes on the cliff path



Wheelchair-accessible options along promenade and first section of Coastal path.



View point

Travel

Bus routes: The **21/21A** run frequently between Ilfracombe, Barnstaple, Bideford and Westward Ho! with stops close to the seafront.



What3words: ///jets.posts.jokes



Abbotsham Cliff from Cornborough
©Neville Stanikk

Finding Nature's Footprints

This three-year Heritage Lottery-funded project, delivered by North Devon Coast National Landscape, helped local people connect with nature and boost wellbeing.

About these guides

These maps and guides are here to help and inspire everyone to explore nature and discover new places across the North Devon Coast National Landscape.

North Devon Coast National Landscape

Taw View, North Walk, Barnstaple, Devon EX31 1EE
www.northdevoncoast-nl.org.uk

E: aonb@devon.gov.uk **T:** 01392 388628

@explorethecoast on Facebook and Instagram

Supported by:



Disclaimer: All material was correct at time of going to print in 2026. The publisher takes no responsibility for any inaccuracies. Leaflet design: www.lathwellcreative.com
Front cover: Abbotsham Cliffs from Cornborough. ©Neville Stanikk

A gentle walk to be enjoyed
at your own pace

Westward Ho! coast path



**North Devon
Coast
National
Landscape**



Westward Ho! sits on the edge of the North Devon Coast National Landscape and offers an uplifting coastal walk with sweeping sea views and one of the most iconic stretches of the Southwest Coast Path. This linear route takes you along dramatic cliffs and open seascapes from the Victorian beach resort of Westward Ho!

Terrain

The Southwest Coast Path section includes some uneven ground; clifftop stretches and exposed areas. It is flat terrain until you reach Abbotsham Cliffs where the coast path becomes steeper and more undulating terrain.

Level 1 according to the Disabled Ramblers grading system.



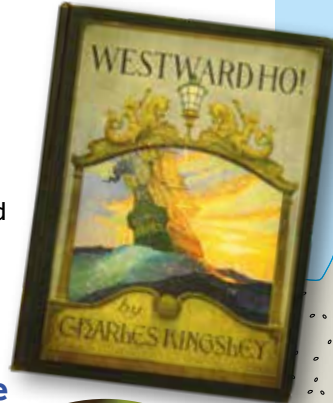
Old Railway line, Cornborough



Greycliff lime kiln

Look out for history

Westward Ho! is closely linked with authors Charles Kingsley & Rudyard Kipling, Victorian tourism, and the long pebble ridge stretching towards the Taw-Torridge estuary. Along the cliffs, you may spot remnants of old lime kilns and the remains of the old railway line that ran along the cliffs from Bideford to Appledore.



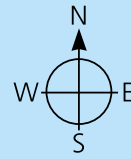
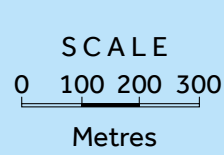
Sea Thrift

Look out for wildlife

Keep an eye out for oystercatchers, turnstones, kestrels, stonechats, and a stunning array of coastal wildflowers in spring and summer. As well as the occasional brave surfer catch waves of the shore.



Primrose



- Trail route
- South West Coast Path
- Starting point



Stonechat
© Martin Batt